



THE VALE
LONDON

Kentia KE03 Autumn

Kentia is a sumptuous linen, adorned with seven kinds of hand-guided embroidery. Its design is an evolution of designer Melinda Marquardt's signature abstract botanical style, using the same techniques as her earlier Sugarbush textile. The Kentia palm itself arrived in London in the 1870s, becoming the last word in exotic status symbols. Queen Victoria even insisted on having them placed around her coffin, leading to a fashion for palm-filled salons at seances. Available in four vibrant colours, designed to coordinate with Mighty Jungle from the World's End collection.

Pattern: Embroidery

Colour: Terracotta, Copper, Autumn, Orange, Cream

Composition: 100% Linen. Embroidery: 70% Viscose, 30% Polyester

Width: 137cm / 53.9"

Horizontal Repeat: 45cm / 17.7"

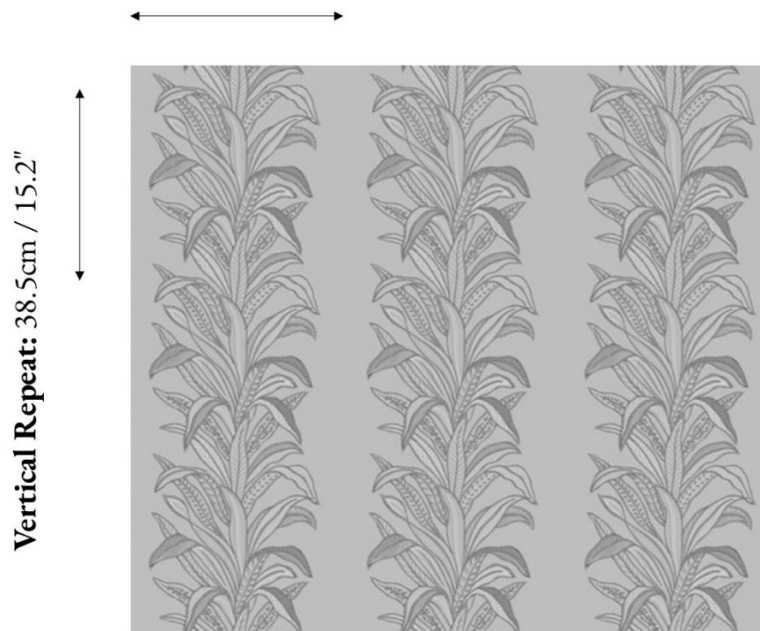
Vertical Repeat: 38.5cm / 15.2"

Cleaning: Dry Clean Only

Uses: Drapery

Collection: World's End Collection

Horizontal Repeat: 45cm / 17.7"



UK: +44 (0) 203 885 0870

USA: +1 (855) 817 5854

contact@thevalelondon.co.uk