

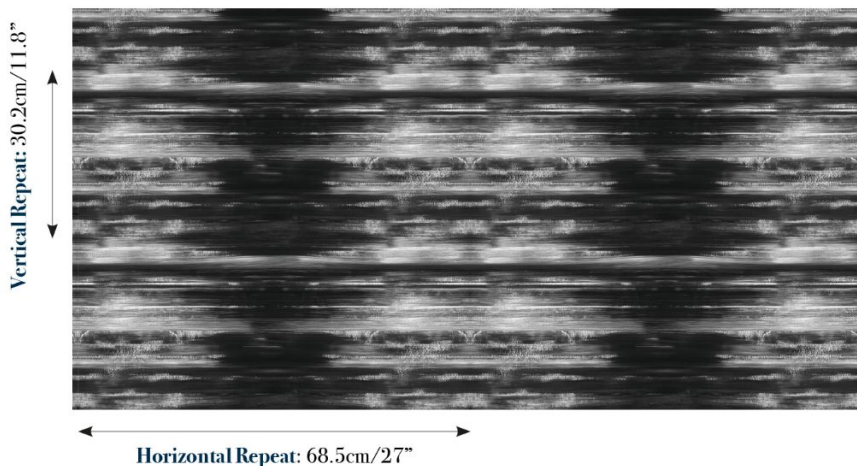


THE VALE
LONDON

Painted Strié PS004 Charcoal

Adapted from a large abstract painting using a large bristle brush, Painted Strié is a soft cotton jacquard woven to capture every stroke in the original art work. At The Vale we believe that every metre of fabric is a piece of art for the home and the hand of the artist should be palpable in the final product. We work closely with our mills to ensure every detail is translated immaculately and the final product is the highest quality.

Pattern: Abstract
Colour: Charcoal, Black, Grey, Silver
Composition: 100% Cotton
Width: 139cm / 54.7"
Horizontal Repeat: 68.5cm / 27.0"
Vertical Repeat: 30.2cm / 11.9"
Cleaning: Dry clean only
Uses: Multipurpose, 30,000 Martindale
Collection: The Beaufort Collection



UK: +44 (0) 203 885 0870
USA: +1 (855) 817 5854
contact@thevalelondon.co.uk